



Tommy Tank Crawler

Discover the Joy of a
mechanical Friend



NOT
included

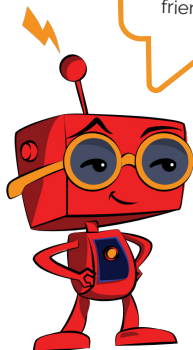


Level



Tommy

the Tank Crawler



Hi there!
I'm Mr Sparkz
Let me introduce
you to my
friend Tommy!

Hey there, little buddy!

I'm Tommy,
the tank crawler,
but you can call me Tommy!

I'm a tank crawler and
I'm here to tell you about
me, so get ready for
some wroom-wroom fun!



Hello there, little buddy! I'm Tommy, the friendly wooden tank! I'm here to be your new pal and help you have lots of fun.

We can go on exciting adventures together and explore all sorts of amazing things. Let's be best buddies and have a blast!

Let's see what we need and how to prepare:



How to get prepare:

- Before you start, you need to find a safe and clean place to work.
- If you have any questions or need help, you can ask your parents, a grownup or teacher and they will assist you.

Have fun!



Remember to get 2 x AA batteries for Tommy!



Some things to keep in mind:

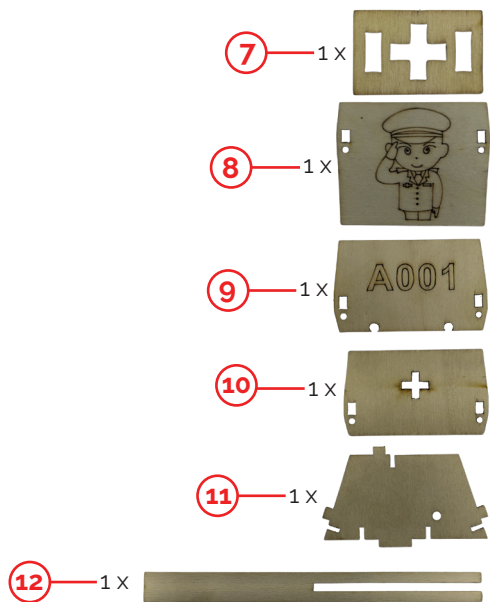
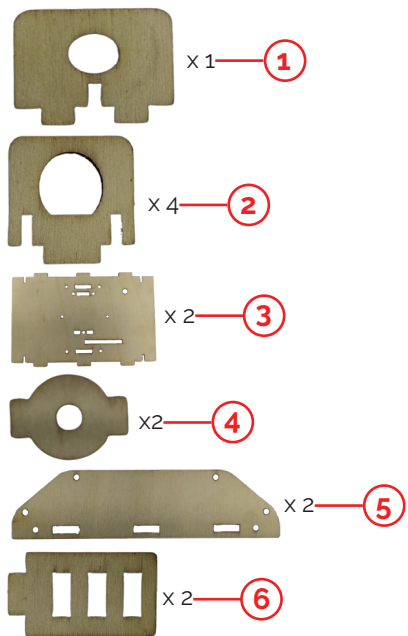
- *Be careful:* When you open the package with the parts, be careful not to drop or lose any small parts. They are very important for your model. If you lose a piece, your model might not work!
- *Read and follow:* If you want to make your model easily, you need to read the instructions well and follow the steps.



What is in the BOX

- 10 different boards
- 4 shafts
- 1 motor
- 1 switch
- 10 pulleys
- 2 gears
- 2 rubber bands
- 1 battery box
- 1 black wire
- 18 7mm screws
- 4 4mm screws







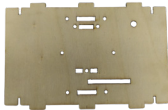
Step 1



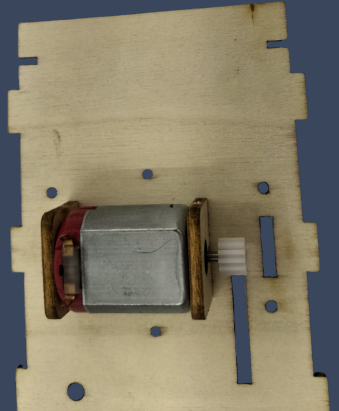
Attach board 1 and board 2 to the motor. Install the worm gear on the shaft of the motor.

Step 2

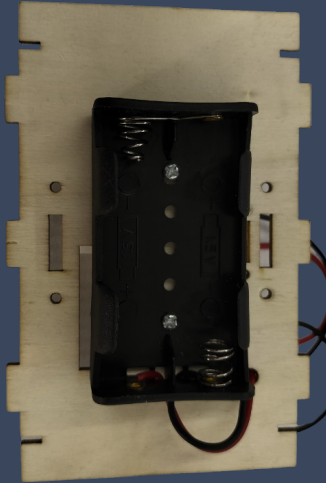
3



Attach the motor onto board 3. Secure board 1 and board 2 with screws.

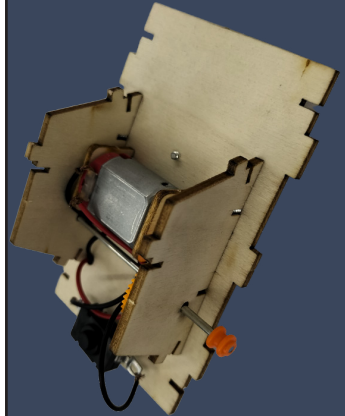
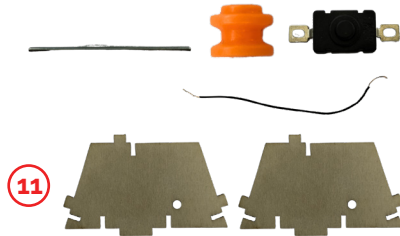


Step 3

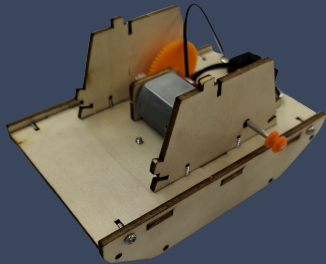


Take the wires from the battery box and pass them through the hole in board 3. Use two 4mm screws to fasten the battery box.

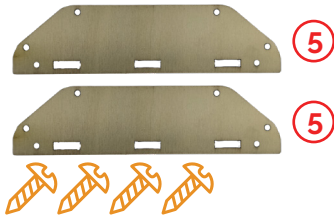
Step 4



Connect the red wire from the battery box to the copper plate on the right side of the motor. Connect the black wire from the battery box to the right side of the switch. Use the extra black wire to connect the left side of the switch to the left copper plate of the motor. Install two board 11s on board 3 and slide a shaft through both board 11s. Put a orange gear on both sides of the shaft.

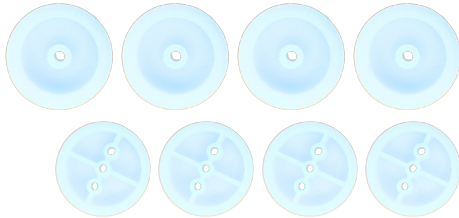


Step 5

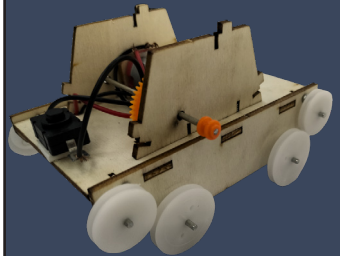


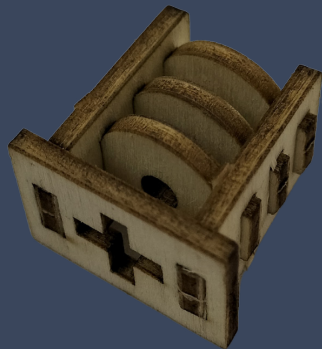
Attach two board 5s to board 3 using 7mm screws.

Step 6



Insert four shaft through the holes of the two board 5s. Put pulleys on each side of the shafts.





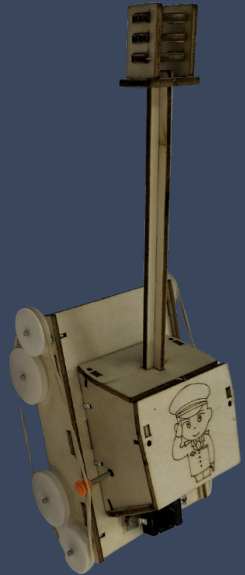
Step 7



Start by attaching three board 4s to two board 6s. Then, slide board 7 into board 6. Lastly, link the two board 12s together.

Step 8

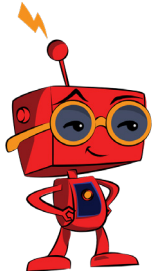
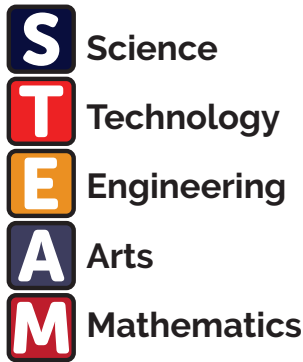
Insert batteries to see Tommy move!



Now you have

your very own Tommy!

Congratulations, adventurer! There you go, I'm so excited to see you have fun with Tommy, my little friend! Let the wind carry us on amazing adventures together!

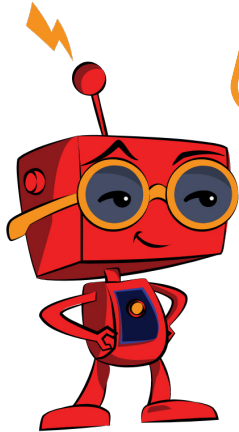


STEAM kits - help kids learn many skills they'll need in a fun and practical way.

Here's how they help:

1. *Hands-On Learning:*
Kids do experiments and projects, making learning fun.
2. *Problem-solving:*
They learn to solve problems by thinking and trying things out.
3. *Creative Thinking:*
Arts and design are part of *STEAM*, so kids get to be creative.
4. *Confidence:*
Completing projects makes kids feel like they accomplished something
5. *Preparation:*
STEAM skills are important for the future, so kids are ready for jobs.

Collect them all



With a bit of imagination you can create your own unique friends. Please share your creations with our community

Please ask you mom / dad / teacher or a grown up to help you to upload your creations to our community page on the website. We would love to see your creations and also share and inspire the little creator in you.

Tommy

Tank crawler



Wanderer

Go-kart



Skyraider

Wind Fighter



J.J

Jeep

